



PHYSICAL PLANNING, DEVELOPMENT & OPERATIONS

SANTA CRUZ, CALIFORNIA 95064

January 20, 2021

State of California  
Office of Planning and Research  
1400 Tenth Street  
Sacramento, CA 95814

## **REVISED NOTICE OF AVAILABILITY ENVIRONMENTAL IMPACT REPORT**

**Project Title:** UC Santa Cruz 2021 Long Range Development Plan

**Project Location:** UC Santa Cruz Main Residential Campus (1156 High Street) & Westside Research Park (2300 Delaware Avenue), Santa Cruz

**County** Santa Cruz County

**Draft EIR Public Review Period** Thursday, January 7 to Monday, March 8, 2021

**Revisions:** UC Santa Cruz has revised the Notice of Availability to provide additional information on how agencies and members of the public can review a printed copy of the Draft Environmental Impact Report and a summary of the significant environmental effects, as well as to provide additional information on how to register and attend the two public meetings/sessions. Additional information is identified with underlined text. This Revised Notice of Availability supersedes the prior notice.

Pursuant to the State of California Public Resources Code (PRC) 21091 (a) and the Guidelines for the Implementation of the California Environmental Quality Act (CEQA Guidelines), the University of California, Santa Cruz (UC Santa Cruz) has released for public review a Draft EIR for the UC Santa Cruz 2021 Long Range Development Plan (LRDP).

### **Project Overview**

UC Santa Cruz is considering adoption of the 2021 LRDP, which would replace the 2005 LRDP and would guide the physical development of new academic, housing, and support uses necessary to achieve the campus' mission. The LRDP establishes a land use framework for, academic and administrative space needs, housing, open space, circulation and other land uses that ultimately facilitate the appropriate siting of capital projects. All UC campuses are required to prepare a Long Range Development Plan to guide physical campus development.

The 2021 LRDP campus population forecast is 28,000 Full-Time Equivalent (FTE) students<sup>1</sup> and 5,000 FTE faculty and staff. To accommodate the projected increase in campus population, the LRDP proposes to add 8,500 student housing beds, approximately 550 employee housing units, and approximately 3,100,000 assignable square feet (ASF) of academic and administrative building space. The 2021 LRDP land use plan supports potential growth on the UC Santa Cruz main residential campus located at 1156 High Street and the Westside Research Park located at 2300 Delaware Avenue in the City of Santa Cruz.

### **List of Significant Environmental Effects**

Implementation of the 2021 LRDP would result in the following significant and unavoidable environmental impacts, following implementation of feasible mitigation measures:

<sup>1</sup> An FTE student is (1) an undergraduate student who enrolls for 45 credit hours per academic year; or (2) a graduate student (master's level or doctoral student not yet advanced to candidacy) enrolled in 36 hours per year; or (3) a graduate doctoral student who has been advanced to candidacy. This does not include students studying at locations other than the main residential campus and the Westside Research Park.

- ▶ Conflict with or obstruct implementation of an applicable air quality plan.
- ▶ Operational emissions of criteria air pollutants and precursors.
- ▶ Impacts to historical resources.
- ▶ Generate substantial temporary construction noise.
- ▶ Directly or indirectly induce substantial unplanned population growth and housing demand, and
- ▶ Impacts on water supply.

The 2021 LRDP would also result in significant impacts that can be mitigated to a less than significant level related to the following environmental issue areas: aesthetics, air quality, cultural resources, biological resources, geology and soils, greenhouse gas emissions and climate change, hazards and hazardous materials, noise, public services, transportation, and wildfire. Significant cumulative impacts related to air quality, historical resources, noise, population and housing, and water supply would also occur.

## Environmental Review and Comment

The University of California is the Lead Agency under the California Environmental Quality Act (CEQA) (PRC, § 21000 et seq.) and has prepared a Draft Environmental Impact Report (EIR) for the LRDP as required by PRC § 21080.09. The Draft EIR has been released for a **60-day review period**, beginning on **Thursday, January 7, 2021** and concluding on **Monday, March 8, 2021**.

**Public Review:** During the public review period, copies of the Draft EIR are available online and via check-out at the following locations for review:

**Online:** <https://lrdp.ucsc.edu/>

**Printed Copies:** Due to COVID-19 and the regional “stay-at-home” order for Santa Cruz County, printed copies of the Draft EIR are available to be checked out from UC Santa Cruz by contacting Physical and Environmental Planning Services at [lrdp@ucsc.edu](mailto:lrdp@ucsc.edu) or at (831) 459-3732.

A copy of the Draft EIR is also available to be checked out from the Santa Cruz Library at any of the Santa Cruz County Branch Libraries through the “Grab & Go Lobby Service.” For hours and instructions visit: <https://www.santacruzpl.org/grab-and-go/>

Written comments on the EIR will be accepted anytime during the EIR review period. All comments should be submitted no later than **Monday, March 8, 2021 at 5:00 pm**. Please state **“LRDP EIR Comments”** in the subject line and send your electronic responses via email to: [eircomment@ucsc.edu](mailto:eircomment@ucsc.edu) or written responses via U.S. mail to the following address:

Erika Carpenter  
 Senior Environmental Planner  
 Physical Planning, Development, and Operations  
 University of California, Santa Cruz  
 1156 High Street, Santa Cruz, CA 95064  
 Email: [eircomment@ucsc.edu](mailto:eircomment@ucsc.edu)

**Public Meetings/Hearings:** As a result of the expanding outbreak of COVID-19 and resulting restrictions placed on in-person gatherings throughout California, UC Santa Cruz will host two online public sessions/hearings to receive verbal comments on the Draft EIR, rather than in-person events. The online public sessions/hearings will be hosted on **Wednesday, February 3, 2021** and **Thursday, February 4, 2021** from **5 p.m. to 7 p.m.** The public sessions/hearings will be held as a Zoom Webinar. Depending on the number of attendees, verbal comments during the meeting may be limited to three minutes to ensure that everyone has the opportunity to be heard. To capture all comments, the meeting may extend beyond 7 pm. Information about how to register and participate in the meeting can be found here: <https://lrdp.ucsc.edu/>

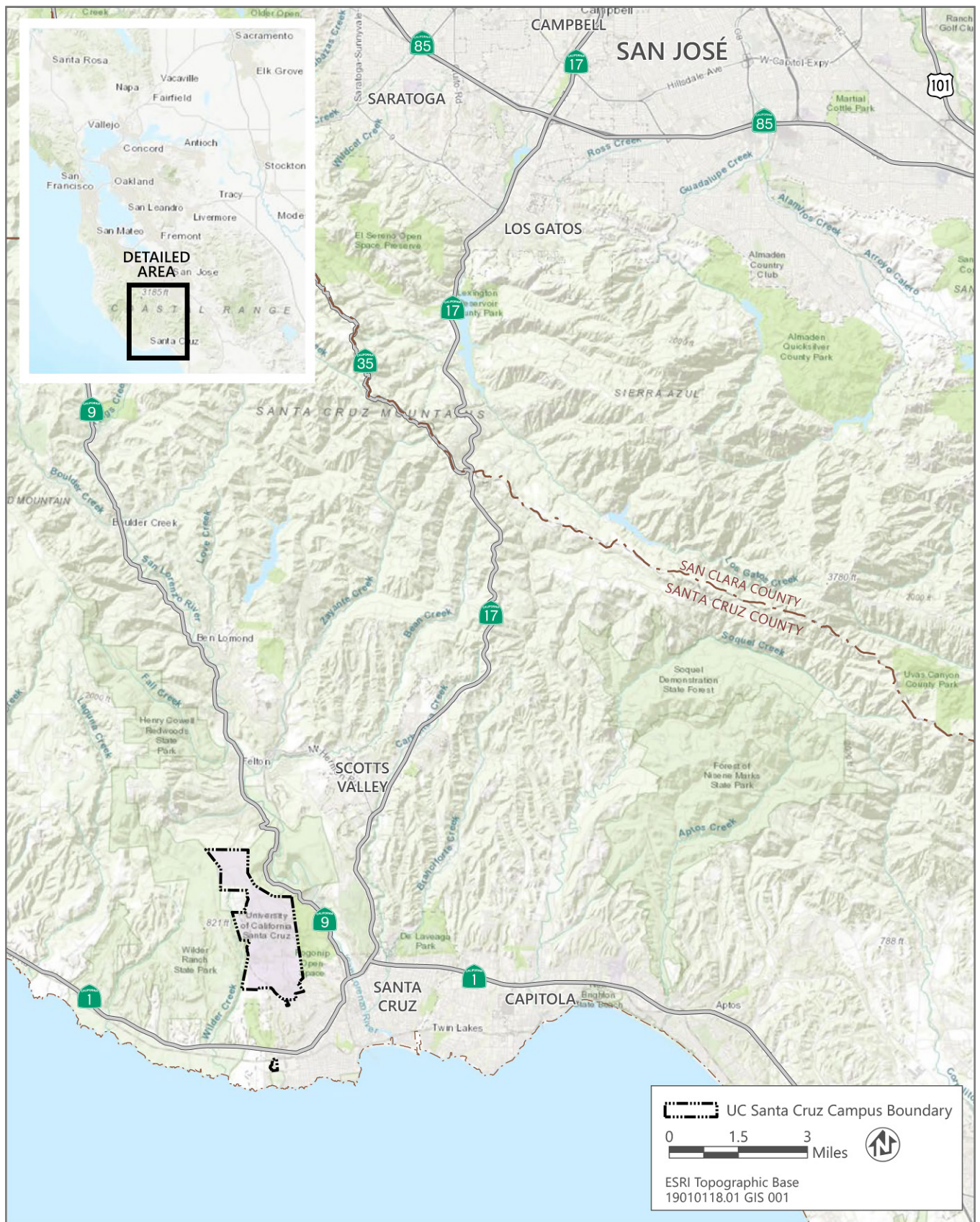
If you have questions regarding this NOA, would like to request accommodation for the public meetings, and/or would like to request a USB/flash drive of the Draft EIR and/or its appendices, or have any other concerns about access to or availability of the Draft EIR, please contact Erika Carpenter at [escarpen@ucsc.edu](mailto:escarpen@ucsc.edu) or at (831) 459-3732.

**Hazardous Materials/Waste On-Site:** The State of California maintains the linked EnviroStor and Geotracker databases of known contamination sites pursuant to Government Code Section 65962.5. Based on the information gathered from these databases, no sites located within the LRDP area are actively under evaluation, remediation, or verification monitoring.

**Attachments:**

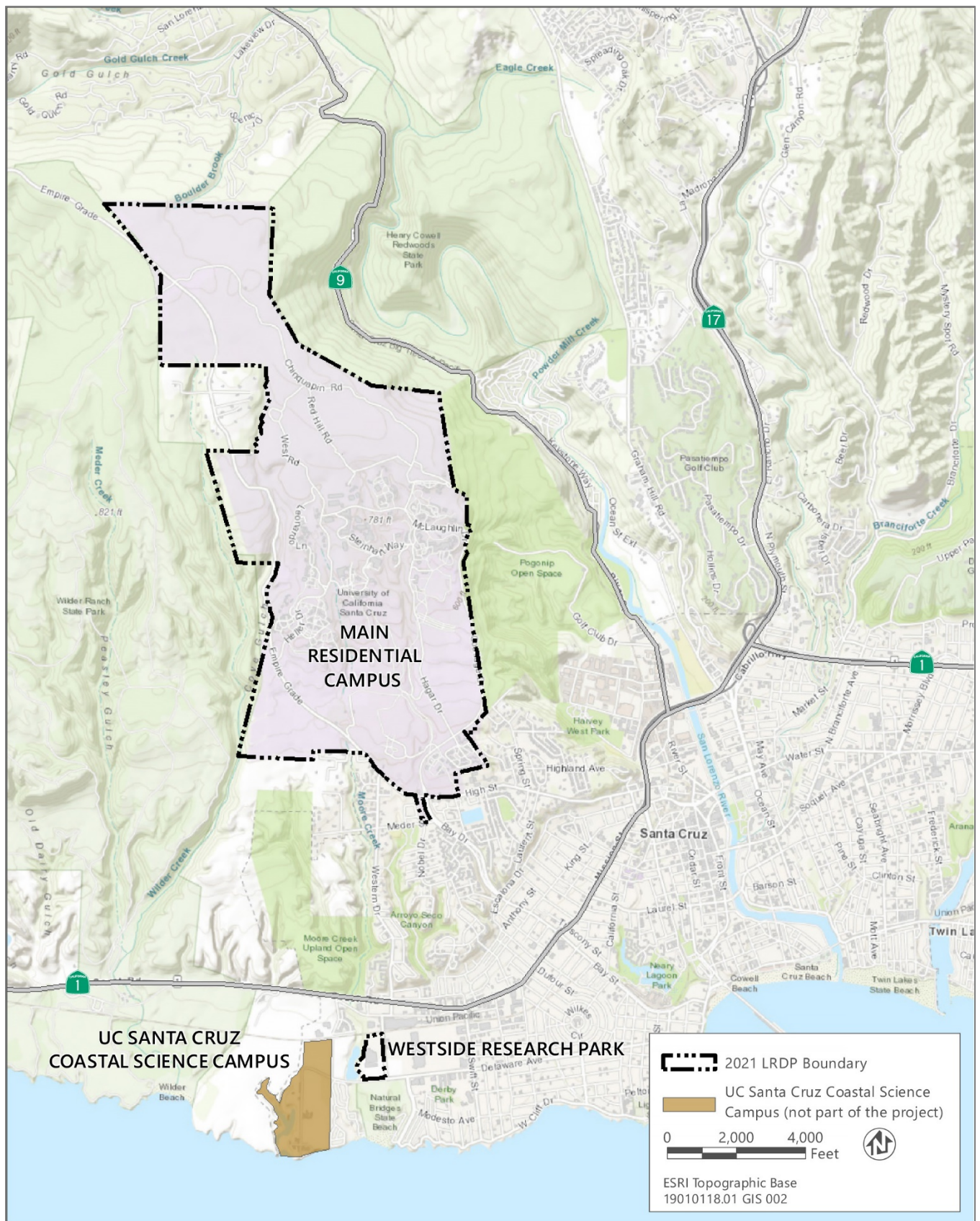
Figure 1 Regional Location

Figure 2 Project Location and Plan Area



Source: data downloaded from Santa Cruz County in 2019

**Figure 1** Regional Location



Source: data downloaded from Santa Cruz County in 2019

**Figure 2** Project Location and Plan Area